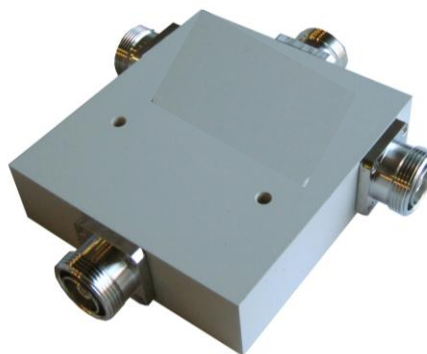


## Features

- ◆ Operates in all telephony bands up to 4G.
- ◆ Low insertion loss.
- ◆ High Power.
- ◆ High isolation.
- ◆ Robust and reliable.
- ◆ IP 66-IEC
- ◆ Operating temperature -45/+85°C.

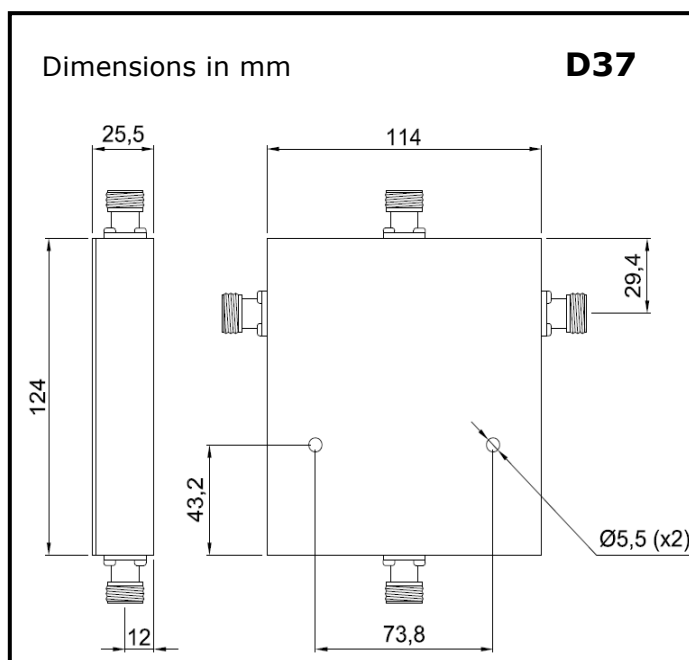
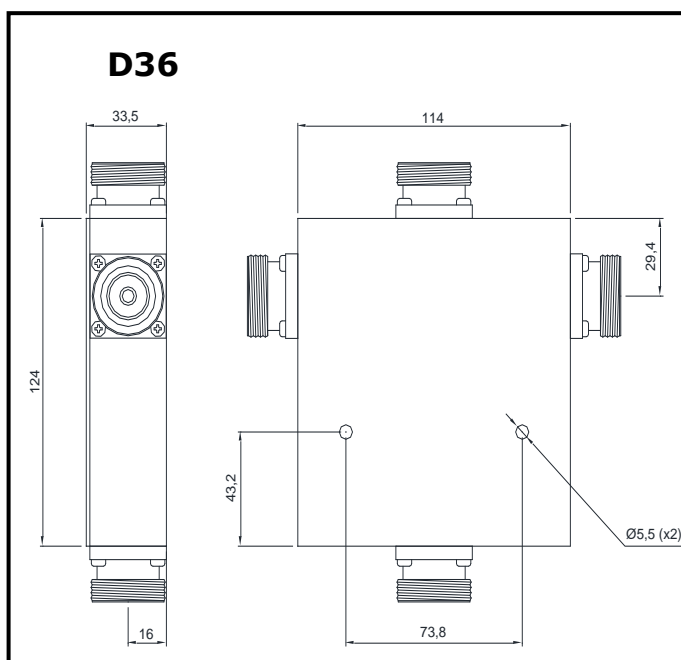


## Description

The new line of high power dividers/combiners, has been developed for intensive use in any facilities as communications, radar, satcom and of global telephony market up to 4G.

Manufactured with multi section technology, that ensures a reliable and robust behavior in any operating conditions.

Available with three kinds of connectors 7/16, N and 4.3/10



## Specifications

Model	Frequency range (MHz)	Insertion loss (dB) (*)	Isolation (dB)	VSWR	Power (w)	Package
IF-D314/X	698-2700	0.6	18	1.38/1	100	D36-D37

(\*): Without considering 4.77dB added by the component.

(\*\*): 10 W by port working as combiner.